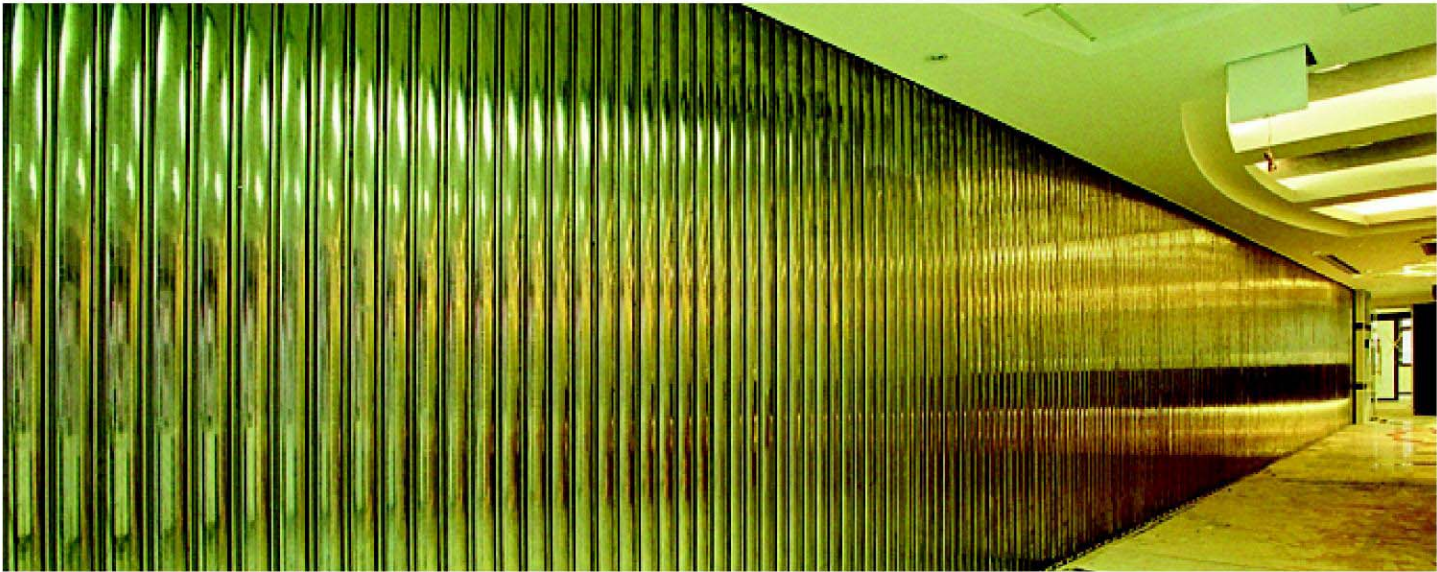




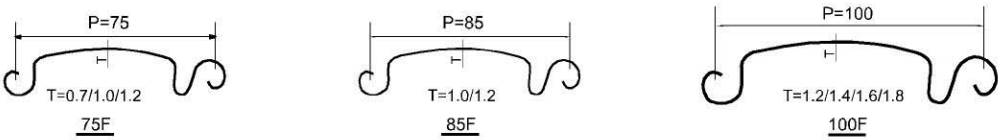
10000mm (W) x 11000mm (H) GMS shutter.

- Shutter curtain:**
- Made of cold rolled steel slats
- Material :**
- Stainless steel SUS 316 & SUS 304 slat from 0.7mm to 1.6mm
  - Hot dip galvanized mild steel slat from 0.7mm to 2mm
- Size :**
- up to 20000mm(W) and 10000mm(H)
- Operation :**
- Manual operated (vertically sliding)
  - Electric operated (vertically sliding)
  - Electric operated (laterally sliding)
  - Electric operated (horizontally sliding)
- Special feature :**
- Special feature: Built with curtain holdfast device (CHD) windload and impact resistance 18000mm(L) laterally sliding security roller shutter.
  - Built with wicket door
  - The curtain holdfast device (CHD) could be applied to huge shutter, to retain windload and impact resistance.



18000mm (L) lateral sliding security roller shutter.

Type of slats



Model No.  
(Types of slat)

Model No. Thickness	GS75F	SS75F	GS85F	SS85F	GS100F	SS100F
0.7-1.2	◦	◦				
1-1.2			◦	◦		
1.2-1.6						◦
1.2-2					◦	

Material: GS: galvanized mild steel SS: stainless steel ◦ : available



GMS shutters at 2008 Olympic Equestrian Venues

